

QUALITATIVE EVALUATION OF AGRICULTURAL LAND BY METHODS BASED ON GIS TECHNIQUES. LENAUEIM CASE STUDY, TIMIS COUNTY, ROMANIA

Radu BERTICI, Daniel DICU, Mihai HERBEI, Florin SALA

Banat University of Agricultural Sciences and Veterinary Medicine “King Michael I of Romania”
from Timisoara, 119 Calea Aradului, 300645, Timisoara, Romania

Corresponding author email: florin_sala@usab-tm.ro

Abstract

This study assessed the quality of agricultural land in the area of Lenauheim, Timis County, Romania. Analog maps (1:10,000 scale) processed by GIS techniques (vectorization, digitization) were used. In relation to the 6 indicators taken into account, the studied area was characterized: Indicator 4C - Classes of average annual precipitation corrected in relation to the slope and permeability, 2 classes were found (0575 and 0650); Indicator 14 - Degrees of soil gleic status, 5 classes were found with high value for class 2 - low soil gleic level, 37.52%; Indicator 23A - Soil textural classes, 5 textural classes were found, between sand - clay and clay, with a high share of the medium clay class (42 - clay sand-clay, 92.01%); Indicator 39 - Depth classes of the groundwater level, 5 classes of groundwater were found (class 2 - shallow depth 2.01-3.00 m, 49.54%); Indicator 44 - Classes of the degree of soil compaction, 4 classes of compaction level were found (class +5 - low compacted (1-10%), 75.51%); Indicator 144 - humus reserve class (in layer 0-50 cm), 6 classes were found (class 225 - very high humus reserve 201-250 t/ha, 81.60%).

Key words: GIS techniques, quality classes, soil diversity, soil quality indices, spatial variability.

INTRODUCTION

Agricultural lands show different levels of favorability for agricultural crops depending on the climatic zone (Borrelli et al., 2016; Raza et al., 2019), the physical, chemical, biological properties of the soil (Panday et al., 2019; Tesfahunegn and Gebru, 2020; Alawamy et al., 2021), the presence and degree of manifestation of some limiting factors (Everest et al., 2021).

In order to assess the favorability of agricultural land for different categories of agricultural use, and farm management, it is necessary to analyze and evaluate them based on specific quality indicators (Gelaw et al., 2015; Dai et al., 2018; Pouladi et al., 2020; Mulat et al., 2021).

Remote sensing has been used for a long time, successfully, in various studies and applications for land study, land quality assessment, land use classification, land records by use categories (Govedarica et al., 2015; Herbei and Sala, 2016; Kim, 2016; Popescu et al., 2020; Nedd et al., 2021; Winkler et al., 2021).

The characterization of agricultural land has been done in various studies related to land-use

planning and management (Lee et al., 2020; Ippolito et al., 2021; Ghadami et al., 2022), agricultural systems (Viana et al., 2022), basic soil parameters (Vilček et al., 2020), soil quality indices (Rahmanipour et al., 2014; Gelaw et al., 2015), agricultural technologies (Rocha et al., 2019), the impact of agricultural technologies and land management on the soil (Qi et al., 2011; Salvati, 2013), agricultural production and productivity (Blum, 2013), land use programs, policy and socioeconomic aspects (Rondhi et al., 2018; Spangler et al., 2020; Fei, 2022; Ghadami et al., 2022).

For the qualitative assessment of the land in relation to certain categories of use and agricultural crops, certain indicators of high importance for the soil are taken into account and certain calculation formulas were used, which quantify the participation of each factor in the assessment and classification of land in use categories (Florea et al., 1987a, b).

The present study used GIS techniques to evaluate agricultural land, in accordance with five soil quality indicators, in the area of Lenauheim locality, Timis County, Romania.

MATERIALS AND METHODS

Study area

The study considered for analysis and characterization a territory within the Lenaheim ATU (administrative-territorial unit), Timis County, Romania, Figure 1.

The land area taken in the study by satellite images and soil indices, the area of Lenaheim, was 9800.25 ha.

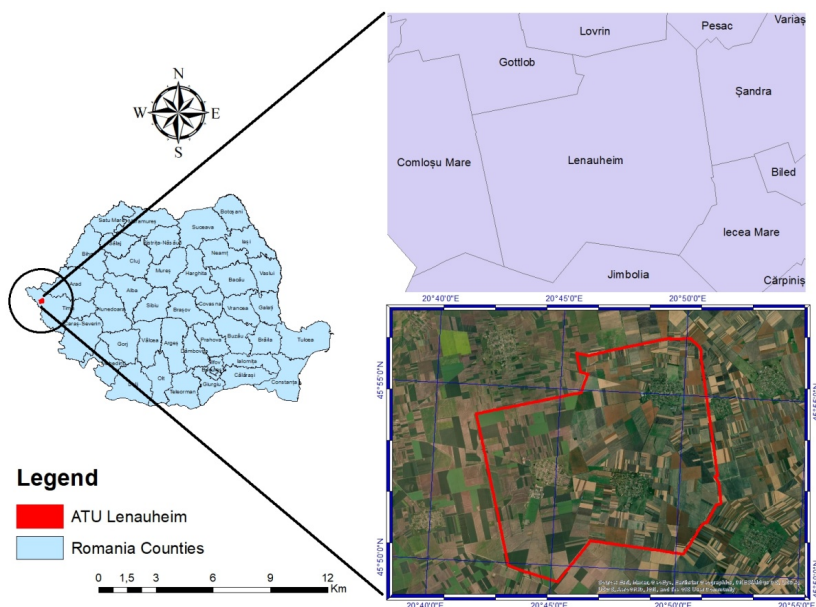


Figure 1. Study area, Lenaheim locality, Timis County, Romania

Indicator 4C expressed average annual rainfall (mm), corrected for terrain slope and soil permeability. Indicator 14 (14) expresses the gleic degree of soil.

Indicator 23A expressed groups of classes, classes and subclasses of soil textures. The granulometry classification was made according to the granulometric components of the soil, clay ($\Phi \leq 0.002$ mm), dust ($\Phi = 0.002 - 0.02$ mm), sand ($\Phi = 2 - 0.02$ mm), and Fs/Cs ratio (Fs – fine sand; Cs – coarse sand).

Indicator 39 (39) expresses depth classes of the groundwater level. Their classification is made according to the depth at which the groundwater is found in the boreholes.

Indicator 44 expresses classes of the degree of soil compaction. The degree of compaction was calculated by formulas, depending on the minimum required porosity (depending on the

Soil indicators

For the characterization of the considered agricultural territory, six soil indicators were taken into account: indicator 4C (average annual precipitation classes); indicator 14 (soil gleic level); indicator 23A (soil textural classes); Indicator 39 (depth classes of the groundwater level); Indicator 44 (soil compaction level classes); Indicator 144 (humus reserve classes) (Florea et al., 1987a,b).

clay), and the total porosity (depending on the apparent and specific density).

Indicator 144 expresses humus reserve classes (in the 0-50 cm layer). The humus reserve was calculated according to the humus content (%), the thickness of the soil horizon (cm) and the apparent density (g/cm^3).

Use of geomatic technologies in land analysis

In the present study, analog maps (topographic and pedological, at a scale of 1: 10,000) were used, which were processed by GIS techniques (vectorization and digitization). The land area taken into account, Lenaheim ATU, was digitized and classified in relation to the Romanian Soil Taxonomy System and the indicators taken into account based on the land assessment methodology (Florea et al., 1987a, 1987b; Florea and Munteanu, 2012).

Data analysis

The data analysis was done in EXCEL (mathematical and statistical analysis module). PAST software was used for some calculations (Hammer et al., 2001). Within each indicator and classification classes, the corresponding area was calculated in absolute values (ha) and percentages values (%). The percentage share of land per class was calculated in relation to each index considered. The cluster analysis included all indices and classes (with the related surfaces), and the values considered were in the percentage form (%).

RESULTS AND DISCUSSIONS

The results obtained in the study of the agricultural land related to Lenuaheim ATU, Timis County, were interpreted in relation to the classification classes of each indicator taken into account.

In relation to the 4C Indicator, within the Lenuaheim ATU there are two classes of precipitation. In relation to the average annual precipitation (mm), corrected in relation to the slope of the land and the permeability of the soil, were found class 0575, flat land, and class 0650 land with micro unevenness.

The share of the two classes within the Lenuaheim ATU was 73.59% for class 0575, respectively 26.41% for class 0650, Figure 2. The spatial distribution map of the territory of Lenuaheim locality, based on the 4C indicator is shown in Figure 3.

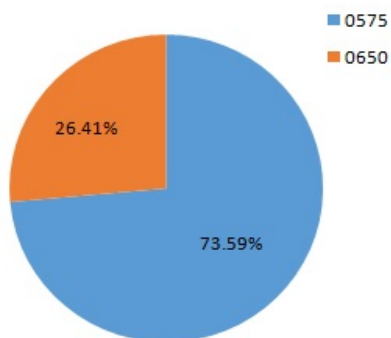


Figure 2. Share of the two classes (0575 and 0650) within the 4C indicator, Lenuaheim ATU, Timis County, Romania

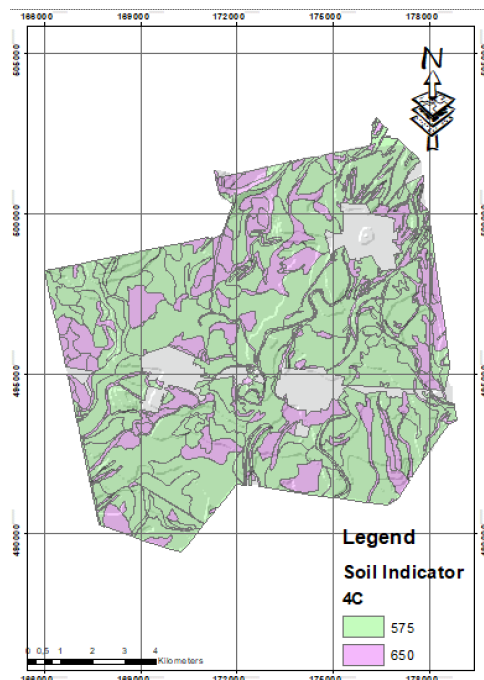


Figure 3. Map of 4C indicator for Lenuaheim ATU, Timis County, Romania

In relation to Indicator 14, within the Lenuaheim ATU, 5 classes of soil gleic status were identified: 1 - phreatic-wet (with deep gleic level), 33.18%; 2 - low gleic level, 37.52%; 3 - moderate gleic status, 19.14%; 4 - strong gleic level, 5.54%; 5 - very strong gleic level, 4.63%, Figure 4.

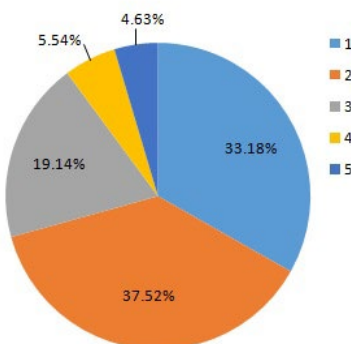


Figure 4. Share of agricultural land in relation to gleic classes, indicator 14, Lenuaheim ATU, Timis County, Romania

Classification criteria are expressed in terms of the intensity of the gleic status and the depth on

the soil profile at which the gleic phenomenon occurs. The spatial distribution map of the territory of Lenaueim, based on indicator 14 is shown in Figure 5.

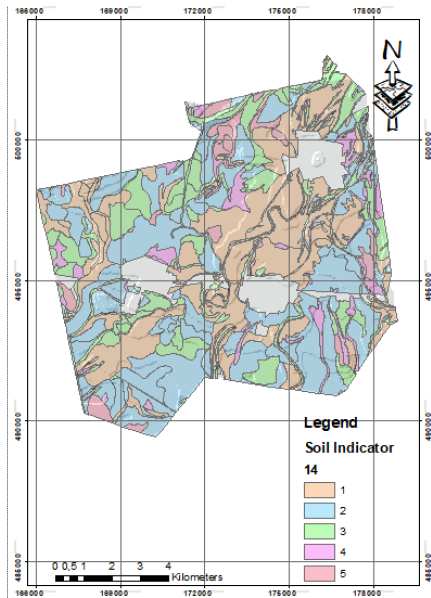


Figure 5. Map of 14 indicator for Lenaueim ATU, Timis County, Romania

In relation to indicator 23A, in the area of Lenaueim locality, 5 textural classes were identified (Figure 6), between sand - clay and clay, with a high weight of class 42, sand-clay; 32 - medium sandy-clay, 0.07%; 42- clay sand-clay, 92.01%; 52 – medium clay, 7.07%; 61 - medium clay-loamy, 0.17%; 62 - loamy-clay, 0.67%.

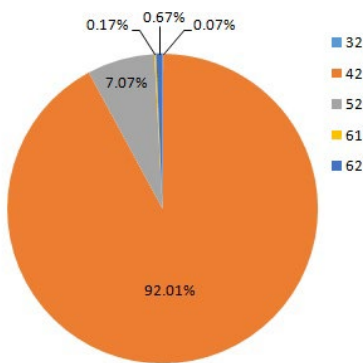


Figure 6. The share of agricultural land in relation to textural classes, indicator 23A, Lenaueim ATU, Timis County, Romania

The spatial distribution map of the territory of Lenaueim, based on indicator 23A is shown in Figure 7.

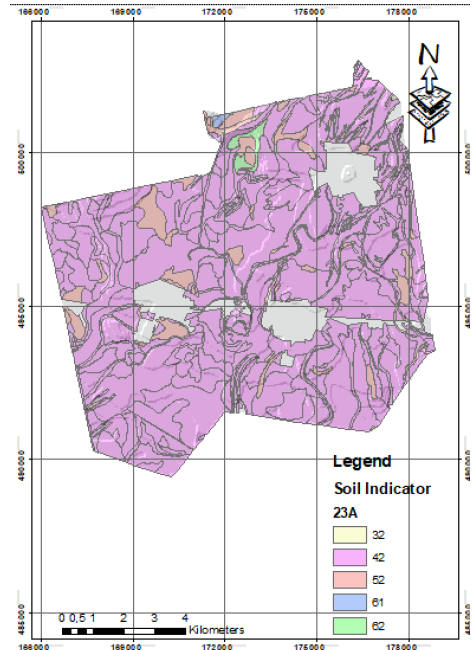


Figure 7. Map of 23A indicator (textural classes) for ATU Lenaueim, Timis County, Romania

In relation to indicator 39, within the Lenaueim ATU, 5 classes of groundwater depth were identified: 0.4 and 0.7 – extremely shallow depth (0.51-1.00 m) 0.12% and 1.12%; 1.4 – very small depth (1.01-2.00 m), 19.02%; 2 – shallow depth (2.01-3.00 m), 49.54%; 3.5 - medium depth (3.01-5.00 m), 30.19%, Figure 8.

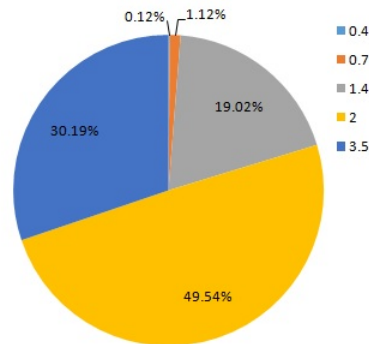


Figure 8. The share of agricultural land in relation to the groundwater depth, indicator 39, Lenaueim ATU, Timis County, Romania

The spatial distribution map of the territory of Lenaheim, based on indicator 39 is shown in Figure 9.

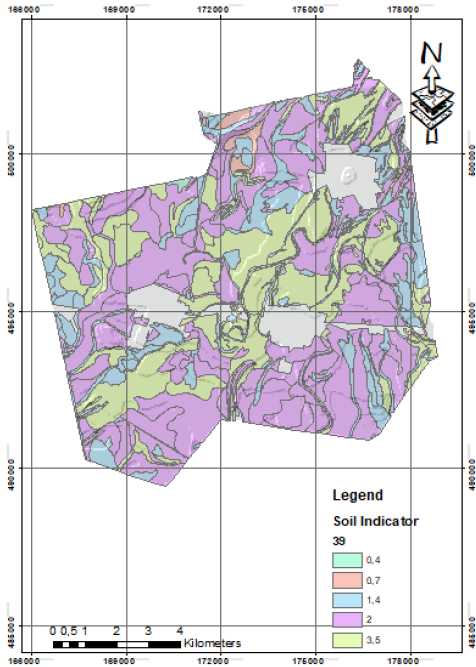


Figure 9. Map of 39 indicator (groundwater depth) for Lenaheim ATU, Timis County, Romania

In relation to indicator 44, 4 soil compaction classes were identified within the Lenaheim ATU: -5 – un-compacted soil (<1%), 11.80%; +5 – low compacted (1-10 %), 75.51%; +15 – moderately compacted (11-18 %), 12.59%; +25 – strongly compacted (≥ 18 %), 0.10%, Figure 10.

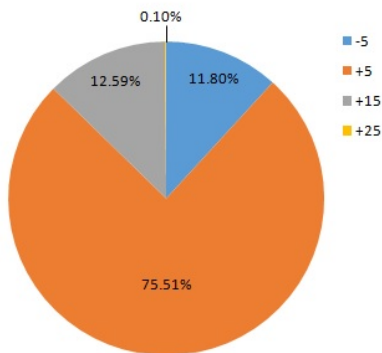


Figure 10. The share of agricultural land in relation to the degree of soil compaction, indicator 44, Lenaheim ATU, Timis County, Romania

The spatial distribution map of the territory of Lenaheim, based on indicator 44 is shown in Figure 11.

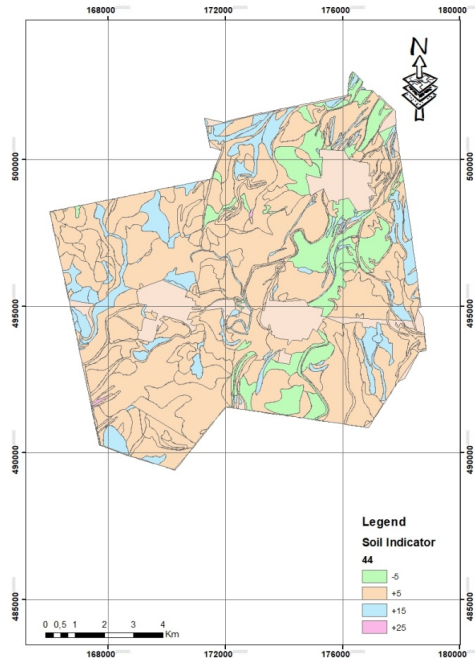


Figure 11. Map of 44 indicator (degree of soil compaction) for Lenaheim ATU, Timis County, Romania

In relation to indicator 144, the humus reserve in the 0-50 cm layer, within the Lenaheim ATU, 6 classes were identified, Figure 12: 090 - low humus reserve (61-120 t/ha), 0.30%; 140 - moderate humus reserve (121-160 t/ha), 0.05%;

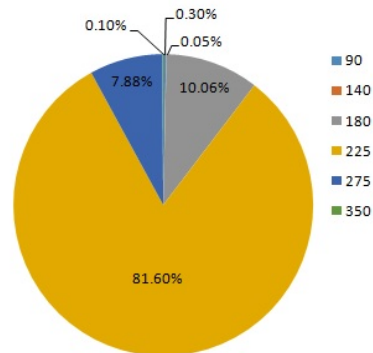


Figure 12. Share of agricultural land in relation to humus reserve (0 - 50 cm depth), indicator 144, Lenaheim ATU, Timis County, Romania

180 - high humus reserve (161-200 t/ha), 10.06%; 225 - very high humus reserve (201-250 t/ha), 81.60%; 275 - very high humus reserve (251-300 t/ha), 7.88%; 350 - extremely high humus reserve (301-400 t/ha), 0.10% (Figure 12).

The spatial distribution map of the territory of Lenaheim, based on indicator 144 is shown in Figure 13.

The overall analysis of the studied territory, in relation to the values on indicators and land classification classes (soil indicators considered) led to the representation in the form of a circular diagram, Figure 14.

The circular diagram in Figure 14 shows the indicators with maximum values (percentage expression of the associated land area) for the characterization of the agricultural territory studied.

Cluster analysis led to the grouping of soil indicators and classes in relation to the percentage value of the associated land area in the characterization of the studied territory, in conditions of statistical safety (Coph. corr. = 0.926).

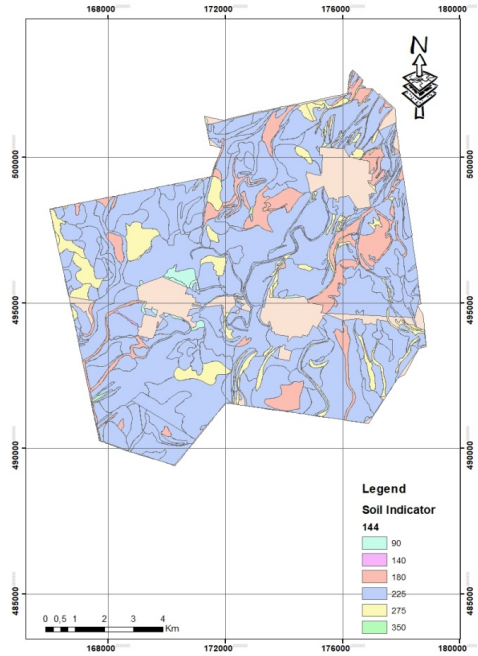


Figure 13. Map of 144 indicator (humus reserve, 0 - 50 cm depth) for Lenaheim ATU, Timis County, Romania

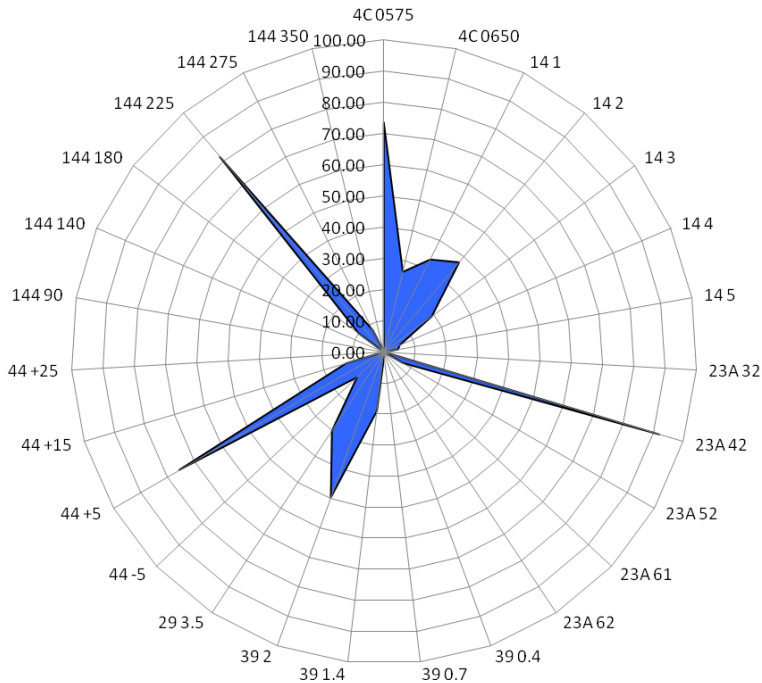


Figure 14. Circular diagram of land characterization indicators and classes, Lenaheim ATU, Timis County, Romania

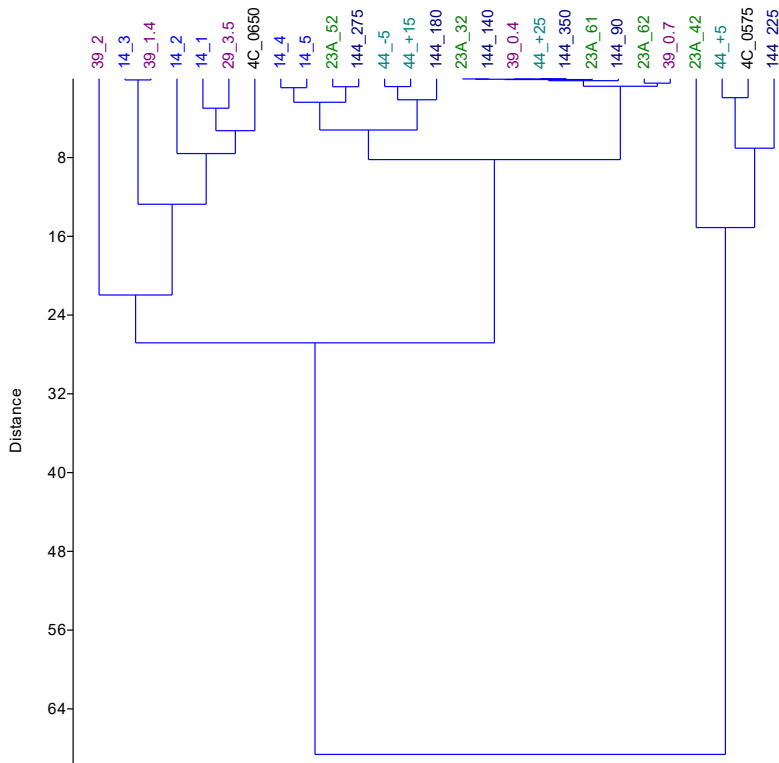


Figure 15. Dendrogram for grouping indices and land characterization classes, expressing the related areas (%), Lenaheim ATU, Timis County, Romania

The grouping of the indices (as a percentage expression of the studied land) was found in two distinct clusters (C1 and C2), with several sub-clusters each. Cluster C1 comprises surfaces associated with 4 indices and classes (maximum values), and cluster C2 comprises the other indices and classes considered, with the surfaces associated with them (Figure 15).

The evaluation of the categories of agricultural land use is important in order to efficiently classify the land in different socio-economic and ecological processes (Mendas and Delali, 2012; Geng et al., 2019; Viana et al., 2022).

Internal and external agricultural markets (Popescu, 2018; Popescu et al., 2018) are based on agricultural products of different categories, and the quantity and quality of agricultural production is consistent with the efficient use of land and agricultural technologies (Sala et al., 2015; King, 2017; Abate et al., 2018; Subramanian, 2021).

Various methods and techniques have been developed and used for the evaluation of

agricultural land, due to the importance of framing as efficiently as possible in relation to the potential of each land area (Theobald, 2014; Burian et al., 2018; Herzberg et al., 2019; Mugiyo et al., 2021; Shang et al., 2021).

Agricultural land valuations are useful for decisions and planning support in crop management and resource allocation (Elsheikh et al., 2013; Herzberg et al., 2019; Li et al., 2020).

Techniques that used GIS and relied on multicriteria analysis in land assessment have been reported in some studies regarding the proper use of land in relation to different agricultural crops, and especially to crops of major importance (Ahmed et al., 2016; Yohannes and Soromessa, 2018), as well as for peri-urban agricultural land studied (Ustaoglu et al., 2021).

Given the appropriate classification of land by category of use, in agricultural areas, another stage in increasing productivity aims at issues of adequate biological material and

improvement of agricultural technologies by optimizing inputs for quality production (Dobrei et al., 2009, 2016; Rawashdeh and Sala, 2014).

The results of the present study show that the technique based on remote sensing and GIS can be promoted for the study, classification and management of agricultural lands, the results communicated being in the trend registered from the reference studies in the field.

CONCLUSIONS

The soil quality indicators that were considered facilitated the classification of the land under consideration, ATU Lenaheim, in relation to the quality classes included in each indicator.

The technique based on remote sensing and GIS, which took into account the indicators and classes resulting from the classical method of analysis, facilitated their transposition into digitized format, the generation of maps for each indicator, and the safe classification of the studied territory.

The cluster analysis led to the grouping of the indicators, with the associated land surfaces on each class, in conditions of statistical security (Coph.corr = 0.926).

The GIS technique based on remote sensing used can be adapted and extended to other indicators, with applicability for different studies of agricultural land.

ACKNOWLEDGMENTS

The authors thanks to the GEOMATICS Research Laboratory, BUASMV "King Michael I of Romania" from Timisoara, for the facility of the software use for this study.

REFERENCES

- Abate, G.T., Bernard, T., de Brauw, A., Minot, N. (2018). The impact of the use of new technologies on farmers' wheat yield in Ethiopia: evidence from a randomized control trial. *Agricultural Economics*, 49(4), 409–421.
- Ahmed, G.B., Shariff, A.R.M., Balasundram, S.K., Abdullah, A.F. (2016). Agriculture land suitability analysis evaluation based multi criteria and GIS approach. *IOP Conference Series: Earth Environment Science*, 37. 012044.
- Alawamy, J.S., Balasundram, S.K., Mohd. Hanif, A.H., Teh Boon Sung, C. (2022). Response of potential indicators of soil quality to land-use and land-cover change under a Mediterranean climate in the region of Al-Jabal Al-Akhdar, Libya. *Sustainability*, 14. 162.
- Blum, W.E.H. (2013). Soil and land resources for agricultural production: General trends and future scenarios-a worldwide perspective. *International Soil and Water Conservation Research*, 1(3), 1–14.
- Borrelli, P., Paustian, K., Panagos, P., Jones, A., Schütt B., Lugato, E. (2016). Effect of good agricultural and environmental conditions on erosion and soil organic carbon balance: A national case study. *Land Use Policy*, 50. 408–421.
- Burian, J., Stachova, M., Vondrakova, A. (2018). Land suitability assessment of the Olomouc region: an application of an urban planner model. *Journal of Maps*, 14(1), 73–80.
- Dai, F., Lv, Z., Liu, G. (2018). Assessing soil quality for sustainable cropland management based on factor analysis and fuzzy sets: A case study in the Lhasa River Valley, Tibetan Plateau. *Sustainability*, 10(10), 3477.
- Dobrei, A., Sala, F., Mălăescu, M., Ghița, A. (2009). Researches concerning the influence of different fertilization systems on the quantity and quality of the production at some table grapes cultivars. *Journal of Horticulture, Forestry and Biotechnology*, 13. 454–457.
- Dobrei, A., Posta, G., Danci, M., Nistor, E., Camen, D., Mălăescu, M., Sala, F. (2016). Research concerning the correlation between crop load, leaf area and grape yield in few grapevine varieties. *Agriculture and Agricultural Science Procedia*, 10. 222–232.
- Elsheikh, R., Shariff, A.R.B.M., Amiri, F., Ahmad, N.B., Balasundram, S.K., Soom, M.A.M. (2013). Agriculture Land Suitability Evaluator (ALSE): A decision and planning support tool for tropical and subtropical crops. *Computers and Electronics in Agriculture*, 93. 98–110.
- Everest, T., Sungur, A., Özcan, H. (2021). Determination of agricultural land suitability with a multiple-criteria decision-making method in Northwestern Turkey. *International Journal of Environmental Science and Technology*, 18. 1073–1088.
- Fei, Z. (2022). Research on rural land planning based on traditional farming culture. *Acta Agriculturae Scandinavica, Section B – Soil & Plant Science*, 72(1), 248–259.
- Florea, N., Balaceanu, V., Răuță, C., Canarache, A. (1987a). Metodologia elaborării studiilor pedologice, Partea a II-a: Elaborarea studiilor pedologice in diferite scopuri, ICPA București, 1987, pp. 348.
- Florea, N., Balaceanu, V., Răuță, C., Canarache, A. (1987b). Metodologia elaborării studiilor pedologice, Partea a III-a: Indicatorii ecopedologici, 1987, ICPA București, 1987, pp. 225.
- Florea, N., Munteanu, I. (2012). Sistemul roman de taxonomie a solului (SRTS). Editura Sitech, Craiova, 2012, ISBN: 978-606-11-2090-1.
- Gelaw, A.M., Singh, B.R., Lal, R. (2015). Soil quality indices for evaluating smallholder agricultural land

- uses in Northern Ethiopia. *Sustainability*, 7, 2322–2337.
- Geng, S., Shi, P., Zong, N., Zhu, W. (2019). Agricultural land suitability of production space in the Taihang Mountains, China. *Chinese Geographical Science*, 29, 1024–1038.
- Ghadami, M., Dittmann, A., Pazhuhan, M., Aligholizadeh Firouzjaie, N. (2022). Factors affecting the change of agricultural land use to tourism: A case study on the Southern Coasts of the Caspian Sea, Iran. *Agriculture*, 12, 90.
- Govedarica, M., Ristic, A., Herbei, M.V., Sala, F. (2015). Object oriented image analysis in remote sensing of forest and vineyard areas. *Bulletin UASVM Horticulture*, 72(2), 362–370.
- Hammer, Ø., Harper, D.A.T., Ryan, P.D. (2001). PAST: Paleontological statistics software package for education and data analysis. *Palaeontologia Electronica*, 4(1), 1–9.
- Herbei, M.V., Sala, F. (2016). Classification of land and crops based on satellite images Landsat 8: case study SD Timisoara. *Bulletin UASVM series Agriculture*, 73(1), 29–34.
- Herzberg, R., Pham, T.G., Kappas, M., Wyss, D., Tran, C.T.M. (2019). Multi-criteria decision analysis for the land evaluation of potential agricultural land use types in a Hilly Area of Central Vietnam. *Land*, 8(6), 90.
- Ippolito, T.A., Herrick, J.E., Dossa, E.L., Garba, M., Ouattara, M., Singh, U., Stewart, Z.P., Prasad, P.V.V., Oumarou, I.A., Neff, J.C. (2021). A comparison of approaches to regional land-use capability analysis for agricultural land-planning. *Land*, 10(5), 458.
- Kim, C. (2016). Land use classification and land use change analysis using satellite images in Lombok Island, Indonesia. *Forest Science and Technology*, 12(4), 183–191.
- King, A. (2017). Technology: The Future of Agriculture. *Nature*, 544, S21–S23.
- Lee, S.A., Kim, J.M., Kim, Y., Joa, J.-H., Kang, S.-S., Ahn, J.-H., Kim, M., Song, J., Weon, H.-Y. (2020). Different types of agricultural land use drive distinct soil bacterial communities. *Scientific Reports*, 10, 17418.
- Li, F., Liu, W., Lu, Z., Mao, L., Xiao, Y. (2020). A multi-criteria evaluation system for arable land resource assessment. *Environmental Monitoring and Assessment*, 192, 79.
- Mendas, A., Delali, A. (2012). Integration of MultiCriteria decision analysis in GIS to develop land suitability for agriculture: Application to durum wheat cultivation in the region of Mleta in Algeria. *Computers and Electronics in Agriculture*, 83, 117–126.
- Mugiyo, H., Chimonyo, V.G.P., Sibanda, M., Kunz, R., Masemola, C.R., Modi, A.T., Mabhaudhi, T. (2021). Evaluation of land suitability methods with reference to neglected and underutilised crop species: A scoping review. *Land*, 10(2), 125.
- Mulat, Y., Kibret, K., Bedadi, B., Mohammed, M. (2021). Soil quality evaluation under different land use types in Kersa sub-watershed, eastern Ethiopia. *Environmental Systems Research*, 10, 19.
- Nedda, R., Light, K., Owens, M., James, N., Johnson, E., Anandhi, A. (2021). A synthesis of land use/land cover studies: Definitions, classification systems, meta-studies, challenges and knowledge gaps on a global landscape. *Land*, 10(9), 994.
- Panday, D., Ojha, R.B., Chalise, D., Das, S., Twanabasu, B., Moral, M.T. (2019). Spatial variability of soil properties under different land use in the Dang district of Nepal. *Cogent Food & Agriculture*, 5(1), 1600460.
- Popescu, A. (2018). Maize and wheat - top agricultural products produced, exported and imported by Romania. *Scientific Papers Series Management, Economic Engineering in Agriculture and Rural Development*, 18(3), 339–352.
- Popescu, A., Dinu, T.A., Stoian, E. (2018). Sorghum - an important cereal in the world, in the European Union and Romania. *Scientific Papers Series Management, Economic Engineering in Agriculture and Rural Development*, 18(4), 271–284.
- Popescu, C.A., Herbei, M.V., Sala, F. (2020). Remote sensing in the analysis and characterization of spatial variability of the territory. A study case in Timis County, Romania. *Scientific Papers: Management, Economic Engineering in Agriculture & Rural Development*, 20(1), 505–514.
- Pouladi, N., Jafarzadeh, A.A., Shahbazi, F., Ghorbani, M.A., Greve, M.H. (2020). Assessing the soil quality index as affected by two land use scenarios in Miandoab region. *SN Applied Sciences*, 2, 1875.
- Qi, Y.B., Huang, B., Darilek, J.L. (2011). Impacts of agricultural land management on soil quality after 24 years: a case study in Zhangjiagang County, China. *New Zealand Journal of Agricultural Research*, 54(4), 261–273.
- Rahmanipour, F., Marzaioli, R., Bahrami, H.A., Fereidouni, Z., Bandarabadi, S.R. (2014). Assessment of soil quality indices in agricultural lands of Qazvin Province, Iran. *Ecological Indicators*, 40, 19–26.
- Rawashdeh, H.M., Sala, F. (2014). Foliar application of boron on some yield components and grain yield of wheat. *Academic Research Journal of Agricultural Science and Research*, 2(7), 97–101.
- Raza, A., Razzaq, A., Mehmood, S. S., Zou, X., Zhang, X., Lv, Y., Xu, J. (2019). Impact of climate change on crops adaptation and strategies to tackle its outcome: A review. *Plants (Basel, Switzerland)*, 8(2), 34.
- Rocha, A., Gonçalves, E., Almeida, E. (2019). Agricultural technology adoption and land use: evidence for Brazilian municipalities. *Journal of Land Use Science*, 14(4–6), 320–346.
- Rondhi, M., Pratiwi, P.A., Handini, V.T., Sunartomo, A.F., Budiman, S.A. (2018). Agricultural land conversion, land economic value, and sustainable agriculture: A case study in East Java, Indonesia. *Land*, 7(4), 148.

- Sala, F., Boldea M., Rawashdeh H., Nemet, I. (2015), Mathematical model for determining the optimal doses of mineral fertilizers for wheat crops. *Pakistan Journal of Agricultural Sciences*, 52(3), 609–617.
- Salvati, L. (2013). Agricultural land-use changes and soil quality: evaluating long-term trends in a rural Mediterranean region. *International Scholarly Research Notices*, 182402.
- Shang, Y., Zheng, X., Han, R., Liu, W., Xiao, F. (2021). Long-term evaluation on urban intensive land use in five fast-growing cities of northern China with GEE support. *Scientific Reports*, 11. 20734.
- Spangler, K., Burchfield, E.K., Schumacher, B. (2020). Past and current dynamics of U.S. agricultural land use and policy. *Frontiers in Sustainable Food Systems*, 4. 98.
- Subramanian, A. (2021). Harnessing digital technology to improve agricultural productivity? *PLoS ONE*, 16(6), e0253377.
- Tesfahunegn, G.B., Gebru, T.A. (2020). Variation in soil properties under different cropping and other land-use systems in Dura catchment, Northern Ethiopia. *PLoS ONE*, 15(2), e0222476.
- Theobald, D.M. (2014). Development and applications of a comprehensive land use classification and map for the US. *PLoS ONE*, 9(4), e94628.
- Ustaoglu, E., Sisman, S., Aydinoglu, A.C. (2021). Determining agricultural suitable land in peri-urban geography using GIS and Multi Criteria Decision Analysis (MCDA) techniques. *Ecological Modelling*, 455. 109610.
- Viana, C.M., Freire, D., Abrantes, P., Rocha, J., Pereira, P. (2022). Agricultural land systems importance for supporting food security and sustainable development goals: A systematic review. *Science of The Total Environment*, 806(3), 150718.
- Vilček, J., Koco, Š., Litavcová, E., Torma, S. (2020). Characteristics of soil parameters of agricultural land use types, their location and development forecast. *Land*, 9(6), 197.
- Winkler, K., Fuchs, R., Rounsevell, M., Herold, M. (2021). Global land use changes are four times greater than previously estimated. *Nature Communications*, 12. 2501.
- Yohannes, H., Soromessa, T. (2018). Land suitability assessment for major crops by using GIS-based multi-criteria approach in Andit Tid watershed, Ethiopia. *Cogent Food & Agriculture*, 4(1), 1470481.